

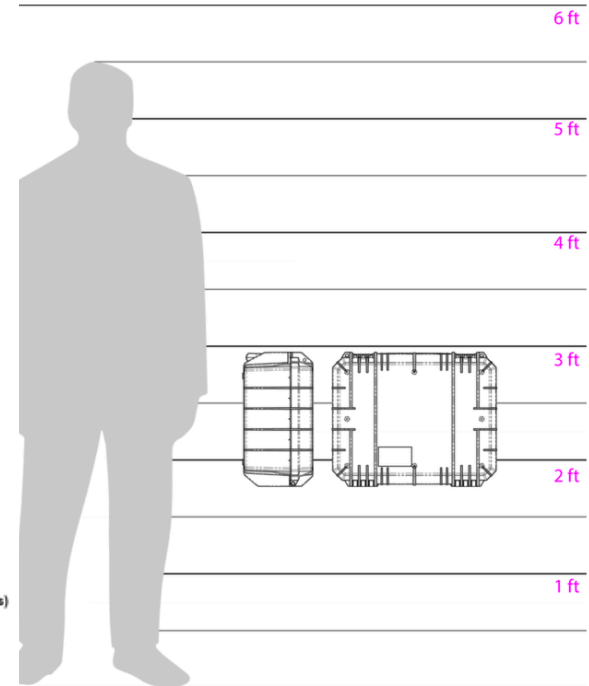
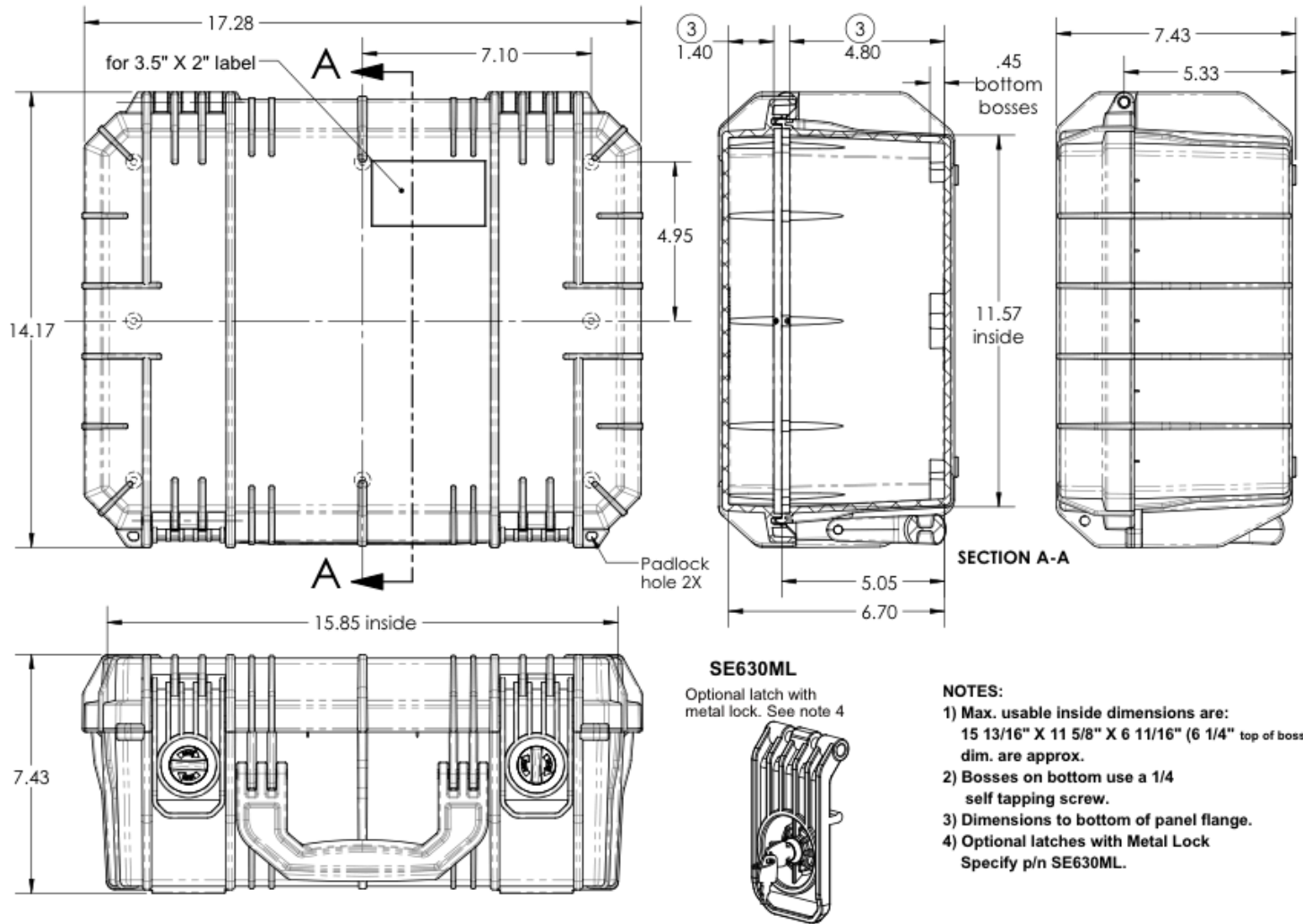
SE630FP6A

HARDERBACK

Maletas Industriales | Maletines Militares
Estuches de Protección | Cajas Polipropileno
Mochilas Resistentes | Cajas Biometricas



[Draw]



NOTES:

- 1) Max. usable inside dimensions are: 15 13/16" X 11 5/8" X 6 11/16" (6 1/4" top of boss) dim. are approx.
- 2) Bosses on bottom use a 1/4 self tapping screw.
- 3) Dimensions to bottom of panel flange.
- 4) Optional latches with Metal Lock Specify p/n SE630ML.